



1090

Granite Ceramic Adhesive Mortar (Double Component)



Product Code : 1090.02

Quality Certificates

The product conforms to the EN 12004-1 standard C2TE S1 class

Description: It is a two-component very strong and flexible adhesive of which component A is cement based mortar in powder form containing polymer additives and component B is composed of very elastic polymer emulsion.

Application Areas: Indoors and outdoors, Horizontal and vertical surfaces, Bonding bigger sized floor and wall ceramic, granite, granite ceramic, marble, clinker and all kinds of natural stone coverings, Places that are exposed to heavy pedestrian traffic such as work places, shopping centers, schools and hospitals, Floor heating systems, Bonding ceramics on top of older granite and marble surfaces, Bonding ceramics on top of gypsumboard, For bonding covering materials such as ceramics, granite ceramic, marble up to 30 m height on outer facade of buildings.

Advantages:

- Provides very flexible and strong bonding.
- Resistant to water and frost, not affected by changes in temperature and has a high degree of high/low temperature resistance.
- Long processing time, saving time and labor.
- Allows long-term correction of bonded plates.
- Not affected by temperature changes, it has high-freezing thaw resistance.
- Provides high stability and does not cause sagging in vertical applications.

Preparation of the Surface: Special attention must be given that the application surface is cured. The application surface must be cleaned off of bonding preventing materials such as dust, oil, paint, silicone, curing agents and detergents. The application surface has to be wetted and must be kept damp. If the surface is very water absorbent, the application has to be implemented after the primer is applied on the surface.

Preparation of the Mortar: 25 Kg Component A (in powder form) is added into a container that contains 7 kg Component B (in liquid form) and mixed by a mixer with low speed or with the help of a trowel provided there will be no lump left over, no extra water shall be added to the mortar. Prepared mortar is left for resting for 5-10 minutes in order for maturing and mixed again before use. The mixture in the pot has to be consumed in 2,5-3 hour.

Application Information: First of all, a contact layer is generated by

pressing the adhesive mortar strongly onto the application surface and later this layer is combed with the help of a notched trowel that is selected appropriately considering the ceramic dimension. Do not proceed to the next upper layer before the lowest layer gains its strength. Allow an expansion joint every 5 m in facade without window. Attention must be paid not to cover over the present dilation joints when bonding tiles. Adhesive mortar has to be applied on the backside of the ceramic and on the surface by utilizing Double Sided Bonding Method and covering plates used must necessarily be fixed by having combing directions perpendicular to each other.

For a proper bonding, bond it with the help of a rubber hammer by applying force.

Consumption: 5,5 – 6,5 kg/m²

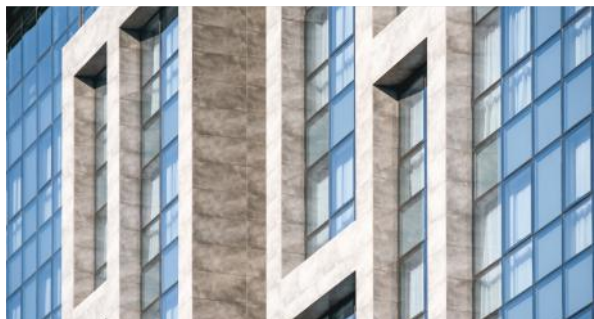
Caution: Avoid application under temperatures below +5°C and over +35°C. Do not add water to the mortar. Tiling has to be done during the 30 minutes period on top of the combed adhesive. If this time is exceeded, the material has to be scraped off from the surface. Avoid application on frozen areas, on areas under risk of freezing in 24 hours or on areas open to direct sunlight or wind. Do not use expired mortar.

Packaging:

Component A: In craft bags of 25 kg
Component B: In plastic drums of 7 kg

Shelf Life: Can be stored in dry environments and in unopened package, in a maximum of 10 packages stacked on a pallet for 12 months. Protect the liquid component against frost and mix it well before use.

Health and Safety: As with all chemical products, contact with food, skin, eyes and mouth should be avoided during usage and storing. If swallowed by accident, consult a doctor. In case of contact with skin, rinse with plenty of water. Must be kept out of reach of children.



Technical Properties

Appearance	: Component A: Grey colored fine powder/ Component B: White colored liquid
Density	: Component A: ~1,35kg/lt/ Component B: ~1,03 kg/lt
Mixture Rate	: 7 lt liquid / 25 kg powder
Resting Period	: 5 - 10 minutes
Pot Life	: Appr. 1 hour
Open Time Tensile Adhesion Strength	: After min. 30 minutes $\geq 0,5$ N/mm ² (EN 1346)
Application Temperature	: Between +5°C and +35°C
Tensile Adhesion Strength	: $\geq 1,0$ N/mm ² 28 days (EN 1348)
Slip	: $\leq 0,5$ mm (EN 1308)
Walk-on Time	: 18 hours
Service Temperature:	: -40°C / +80°C

Application instructions and technical data provided for the products are obtained in line with our experience and the tests we implemented according to international standards under ambient temperatures of 23 ± 2 °C and ambient relative humidity conditions of $50\% \pm 5$. Higher temperatures decrease the times and lower temperatures increase them.